

SketchUp

By Anna Maria Fuxén

With SketchUp 7 you can create, modify and share 3D models for free.

Where to find it

www.google.com/sketchup

<http://sketchup.google.com/download/> The most recent version is SketchUp 7

The most used short commands

Tools for making your object

L for line

R for rectangle

E for eraser

B for paint bucket

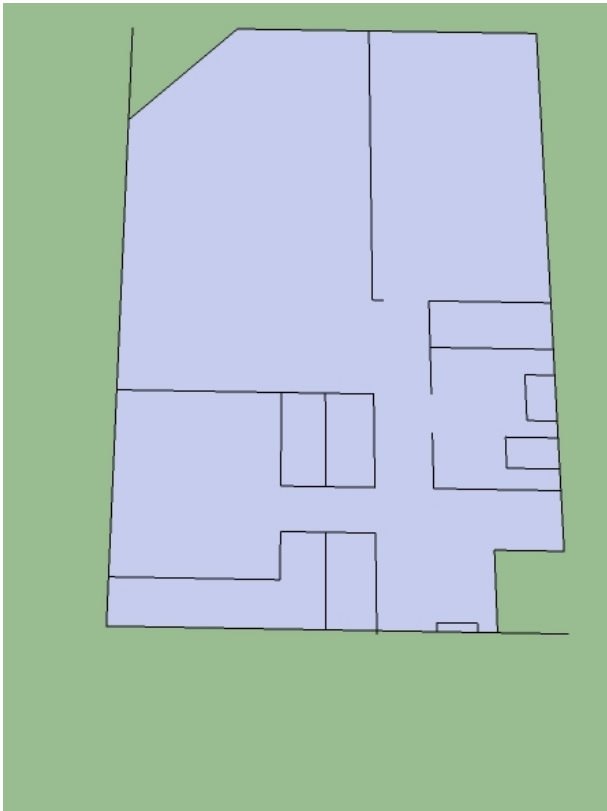
P for push and pull

View of your object

O for orbit

H for pan

Z for zoom



Axis

When you draw a line, it is usually black. Sketch Up indicate which direction the line is drawn. When the line changes color to **green** it is parallel to the green axis, **red** it is parallel to the red axis, **blue** it is parallel to the blue axis giving you the height and **pink** meaning it is parallel to line that neither is on the red, green nor the blue axis.

Measure

When you want to calculate an area you can use the “entity info”. If you mark the line with the arrow, you will get the length. When the area is marked the entire area will be dotted. If you want to add another area press ctrl and left click with the mouse.

You can also use the “text” tool to calculate the area.



Markers/dots

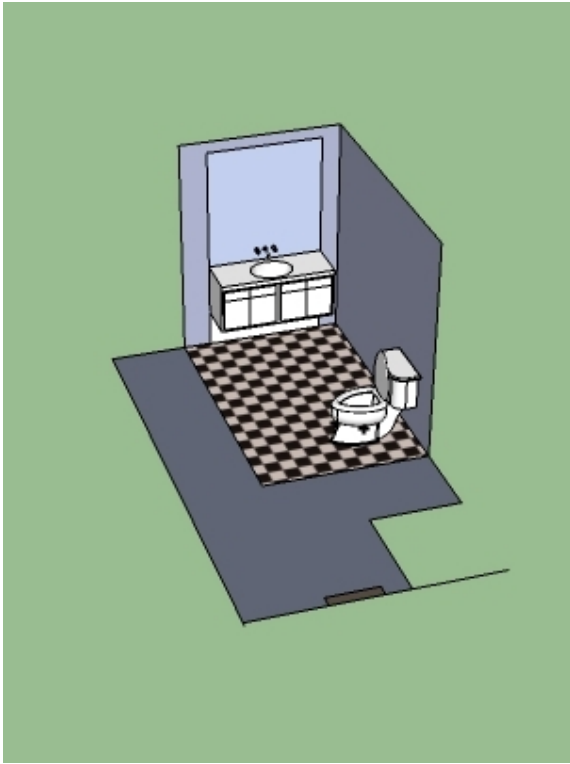
Green dot means endpoint

Light blue means midpoint

You will get a **black** point and a dotted line when SketchUp suggests which endpoint and axis you are aiming for.

Paint Bucket

The paint bucket tool enables you to color the areas in your drawing. To be able to color an area it is easiest if the area is flat and has no loose ends. Sketch Up has provided different categories for the paint bucket such as vegetation, translucent, roofing etcetera. Sketch up also gives you the possibility to alter the nuance and dimensions by choosing the edit button.



Components

1. In the Menu bar, choose **Window > Components** to open the Component browser.
2. In the Component browser, click the **Select** tab to make sure you're viewing the Select panel.
3. In the Select panel, click the **Navigation** button (it looks like an upside-down triangle).
4. From the list in the Navigation drop-down menu, choose the Bonus Pack you're interested in. You can choose from:
 - Architecture
 - Landscape
 - Construction
 - People
 - Transportation
5. Drill down through the sub-collections until you find a model you're interested in.
6. When you find a model you'd like to download to your computer, click on the image of the component in the Component browser.
7. To download all twelve of the models that are visible in your Component browser at once, click the **Details** button and choose **Save as a local collection**.
8. Choose the folder where you'd like to save the models or select **New Folder** to create a new folder for these models.¹

¹ www.google.com/sketchup

3D warehouse

The 3D warehouse is where you find components made by Google and other users. You can also find entire buildings at the 3D warehouse. Try to search for example sink, church or Berlin, it is amazing what you can find.

Some of the components and models made by other users can be made up by many lines which will make your model heavy. The car below is made in Sketch Up.

